

# Lampson Millennium 4100 SII

Crawler Crane



Lampson

# Millennium 4100

Max. Capacity - Series 2 - 230 US Tons  
Max. Line Pull Main Drum - 55,000 lbs  
Max. Line Pull Aux. Drum - 55,000 lbs  
Maximum erected Main Boom Length - 260'  
Maximum erected Main Boom and Jib Length - 230' Boom 60' Jib  
Max. Spooling Capacity Main Drum - 2200' of 1-1/8" OR 1800' of 1 1/4"  
Max. Spooling Capacity Aux. Drum - 2200' of 1-1/8" OR 1800' of 1 1/4"  
Ability to accept Manitowoc Ringer® and Tower® attachments with no Modifications  
Tandem Drum Operation for endless reeving  
Meets FedOSHA requirements for Man Basket Suspension - No Freefall Capability



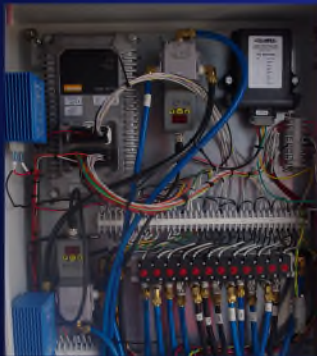
Cummins QSM Tier 3 /4i Engines meet  
Strict Emission Standards



Hydraulic Hoist, Swing and Boom



Newest Generation Comer Industries  
Driven Drums



Computerized Control Systems



Ergonomic Cab with Fingertip Control



Increased Operator Visibility

The Lampson 4100 Millennium Crawler Crane combines the structural integrity and versatility of the Manitowoc 4100 with the safety and ease of operation of the new generation hydraulic operating system cranes. The modernized power train consists of an eco-friendly Tier 3/4i Cummins Engine driving state-of-the-art Comer drum planetaries, which increase single drum line pulls by up to 70% with two line size choices - 1 1/8" and 1 1/4" diameter. The swing system has been converted to hydraulic operation and the original hydraulic boom hoist drive has been retained. Operating controls have been modernized with computer enhanced electronic joysticks controlling all operating functions of the crane. The control system allows tandem drum operating abilities for situations requiring endless reeving. All Millennium series cranes are equipped with LSI load monitoring systems to further enhance safe lift operations.

The Lampson Millennium Crawler Crane meets or exceeds the capabilities of all cranes in the 230 ton capacity class. Offered at a more economical price point, these cranes ensure your projects the utmost in safety, reliability, and cost savings. By utilizing the available Manitowoc Ringer® heavy lift attachment, the capacity can be increased to a maximum of 300 US tons. The Lampson 4100 Millennium also accepts the Manitowoc Tower® attachment to increase available hook height and reach capabilities.

[www.lampsoncrane.com](http://www.lampsoncrane.com)



For Lease or Sale Information Contact any of Our Worldwide Locations:

Lampson Corporate Headquarters (Kennewick, WA USA) - (509) 586-0411  
Denver Colorado Branch Office - (303) 286-1000  
Houston, Texas Branch Office - (713) - 674-2531  
Phoenix, Arizona Branch Office - (602) 237-2080  
Lampson Canada Headquarters (Beiseker, AB) - (403) 947-2222  
Lampson Australia Headquarters (Toronto, NSW) - 011 61249 596222  
or email [genifo@lampsoncrane.com](mailto:genifo@lampsoncrane.com)